

## Social impact report 2022

---

### Our Social Purpose

Page & Bloom creates employment, training and opportunities for women survivors of domestic abuse.



Job opportunities



Paid work experience placements



Free job skills training programme

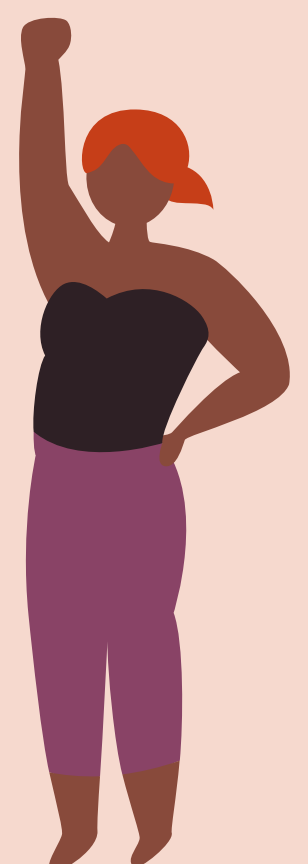


Free flower making workshops for local charities

---

**"I had no confidence when I came to Page & Bloom, now I feel like I can do anything."**

– Training programme participant



# Social impact- training



**26%** of our trainees have English as a second language

**37%** have a learning difficulty or disability

**74%** have been out of work for 6 months or more

“

## Participant Feedback

"Applying for jobs can be such a lonely process... [the training programme] is better than a careers adviser, because this is real life."

Training programme participant

"I've been going through a difficult time in my life and being at Page & Bloom has been a sort of an anchor for me in terms of self-identity. To be physically part of a team and doing things together has brought me a lot of hope and confidence and helped me to re-focus on myself."

Training programme participant

”

# Social impact- employment

## In 2022....

6

survivors started  
new jobs with  
Page & Bloom



we generated

3357

hours of paid  
work for survivors



equivalent to

£36,938

of additional  
LLW income\*



“

"I think leaving a bad relationship is a process, rather than a one-time event. My journey out was a series of events that helped me, with the job at Page and Bloom being a vitally important part of that. [...] I hadn't had a job for years, I'd brought up my children, and felt my CV would look terrible. I was depressed and stuck, with my confidence draining away." *Page & Bloom employee*

“

"I think I've made progress in the fact that I didn't run away and turned up each time."

*Page & Bloom employee*

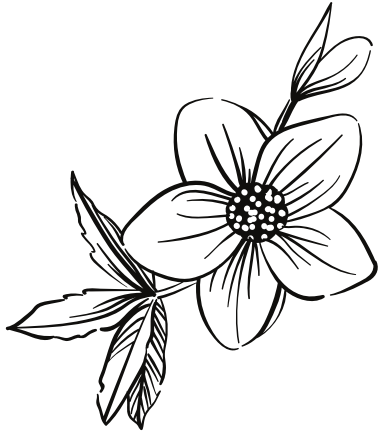
### What's next for 2023?

- Revising training programme based on participant feedback
- Exploring longer term support such as mentoring schemes
- Building partnerships with other employers to offer further work placements and jobs

\*As people's salaries are different, we have calculated the equivalent London Living Wage rate for the hours worked. Some of our staff earn more as they move into more skilled jobs, while the initial work experience placement is paid at National Minimum Wage.

[www.pageandbloom.com](http://www.pageandbloom.com)

# Environmental impact

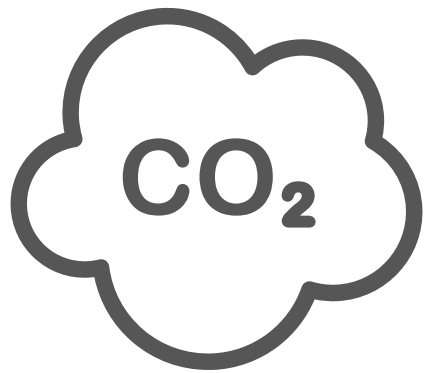
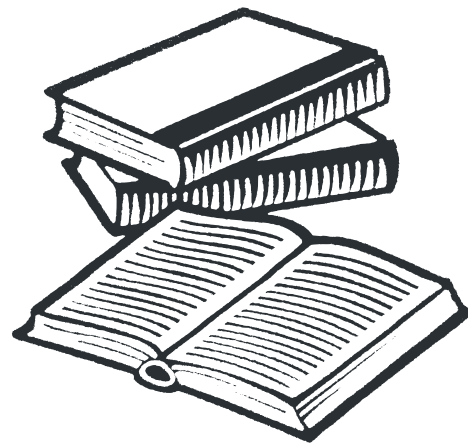


## 7022 paper flowers

The amount of flowers we hand made in 2022... a 1046% increase from our first year of business!

## 21,033 book pages

recycled to make these flowers - that's like 75 copies of Pride & Prejudice!

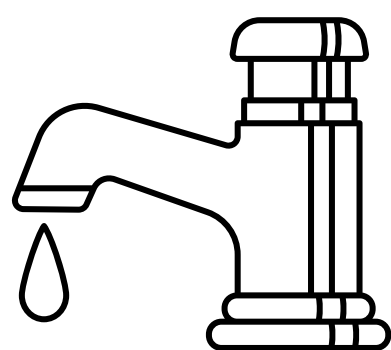


## 20,339 kg

The estimated CO2 emissions from cultivating and transporting 7022 roses from the Netherlands.

## 35,055 litres

The amount of water that could be required to produce this many cultivated fresh roses.



## Where does our paper come from?

- Donations from libraries, house clearances, schools etc.
- Proof copies from publishers and reviewers that cannot be sold
- Car boot sales, unsold books from charity shops etc.

## What's next for 2023?

- Inventing new ways to use off-cuts and minimise paper waste
- Starting to analyse the CO2 and water use in our flower production
- Experimenting with natural dyes

## Find out more

[Subscribe to our mailing list](#) on our website to keep up to date with our latest news and see how we're progressing in 2023.

Or follow us on social media

